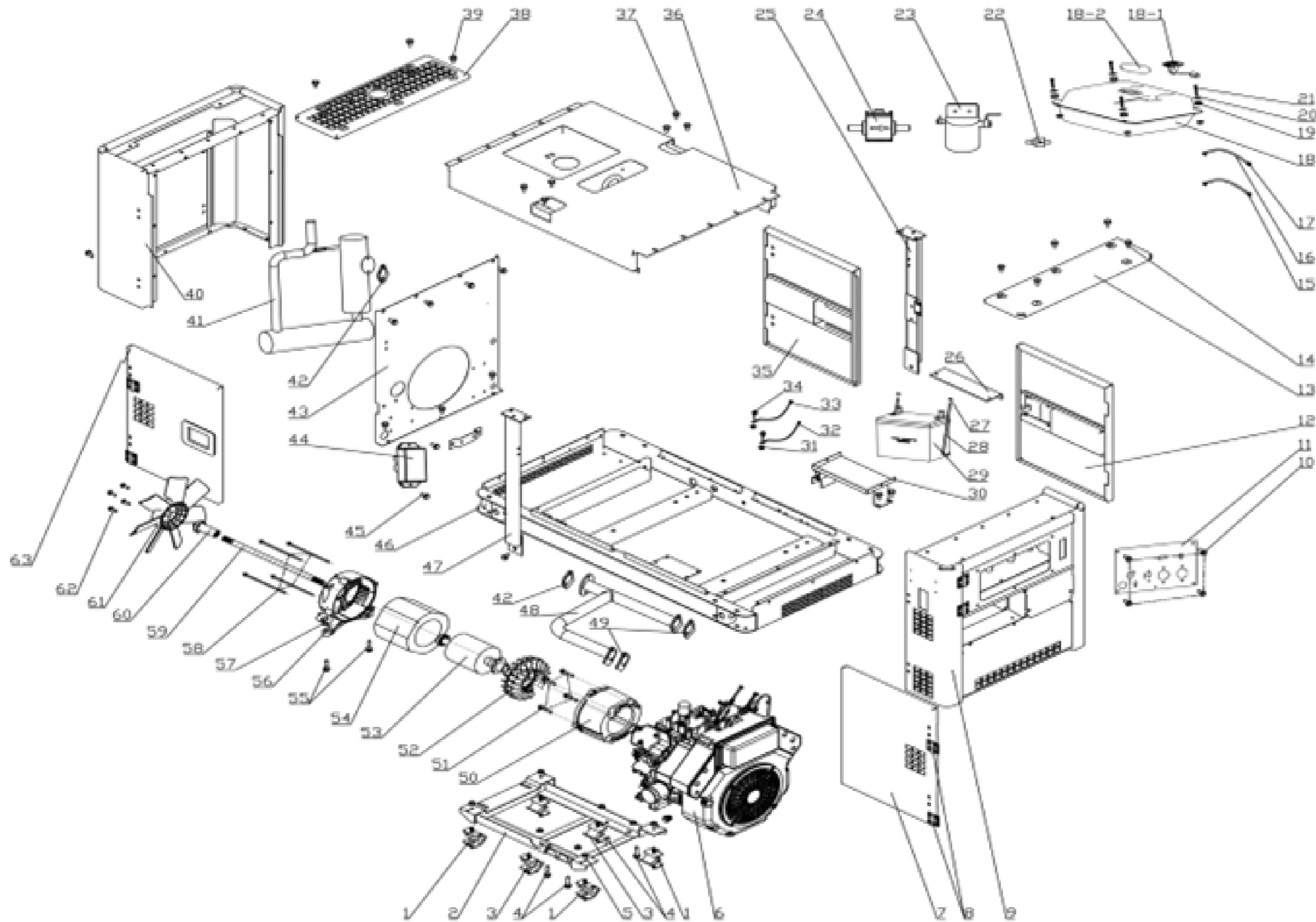


Exploded view for SCD13000Q-3
10KW



NO.	factory code	part name	QTY SCD13000Q-3
1	72.007.9068	Shock mount	4
2	71.022.0062	Shock mount	2
3	/	bracket	1
4	72.008.5038	bolt	4
5	72.008.9001	nut	16
6	71.017.0061.1	engine	1
7	/	Access door	1
8	/	Hinge	8
9	/	Side panel	1
10	72.008.5026	bolt	32
11	/	Control panel assembly	1
12	/	Access door	1
13	/	/	/
14	/	/	/
15	71.023.0040	Clamp	12
16	71.022.0056	Fuel pipe	1.17m
17	72.008.5002	Clamp	8
18	/	Fuel tank	1
18-1		Fuel level gauge	1
18-2		Fuel tank cap	1
19	/	/	/
20	72.008.9061	Fuel tank gasket	4
21	72.008.5028	bolt	6
22	71.025.0011	Check valve	1
23	71.025.0072	Diesel filter	1
24	71.025.0006	Electric fuel pump	1
25	/	Support column 1	1
26	/	Battery pressure plate	1
27	72.008.5018	nut	8
28	71.021.0038	L-bolt	2
29	71.025.0083.1	Accumulator	1
30	/	Battery box	1
31	72.008.5018	nut	2
32	71.022.0063	Positive wire	1
33	71.022.0036.2	Negative wire	1
34	72.008.5028	bolt	2
35	/	Access door	1
36	/	Top cover	1
37	72.008.5034	bolt	6
38	/	/	/
39	/	/	/
40	/	Side panel	1

NO.	factory code	part name	QTY SCD13000Q-3
41	/	silencer	1
42	/	Silencer gasket	2
43	/	Muffler partition	1
44	12.012.0259	A.V.R.	1
45	72.008.5028	bolt	2
46	/	Bottom plate	1
47	/	Support column 2	1
48	/	Muffler connecting pipe	1
49	/	Silencer gasket	2
50	12.029.0070	End cap	1
51	72.008.9063	bolt	6
52	13.004.0022	fan	1
53	12.001.1524	Rotor assembly	1
54	12.002.6461	Stator assembly	1
55	72.008.5038	bolt	2
56	13.030.0043	Motor bracket	1
57	72.008.5019	nut	12
58	35.014.0609	Stator bolt	4
59	71.025.0727	Rotor bolt	1
60	71.025.0096	Fan connection shaft	1
61	/	fan	1
62	72.008.5026	bolt	4
63	/	Access door	1