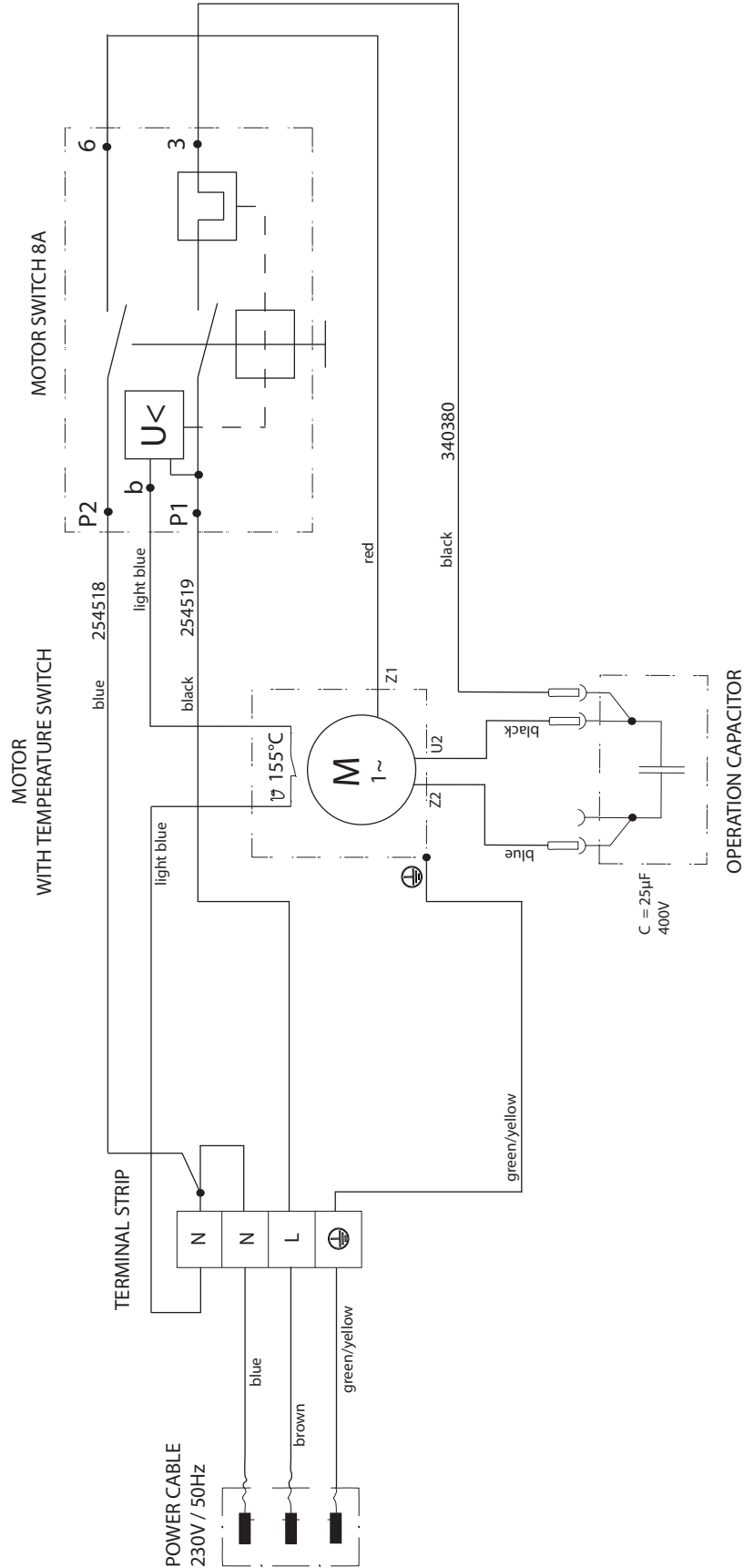


10.7 CONNECTION DIAGRAM



REPAIRS AT THE UNIT

10.7 REMEDY IN CASE OF FAULTS

TYPE OF MALFUNCTION	WHAT ELSE?	POSSIBLE CAUSE	MEASURES FOR ELIMINATING THE MALFUNCTION
Unit does not start	The device does not start after it has been plugged in and switched on.	No voltage applied	Check voltage supply
		Unit fuse has triggered	Let the motor cool down
		Capacitor in terminal box burned out	Replace capacitor
Unit does not suck in	Air bubbles do not exit at the return hose	Inlet/outlet valve clogged / worn	Remove the valves and clean then (-> refer to Section Pkt.10.1/10.2) / replace worn parts
		Pressure control valve turned down completely	Turn the pressure control valve to the right until the stop is reached
	Air bubbles exit from the return hose	Unit is sucking in outside air	Check if Suction system is properly tightened
			Check if red inlet is installed in the inlet valve housing (-> see 4.1)
Unit does not generate pressure	Unit has sucked in	Air in the oil circuit (Possible reasons: long time not used, replacement of diaphragm or hydraulic oil change)	Bleed the oil circuit in the unit by turning the pressure control valve completely to the left (until overturning) and let it run approx. 2 – 3 min. Then turn the pressure control valve to the right and set the spraying pressure (repeat process several times, if necessary).
		Unit reached pressure, but the pressure collapses, also at the pressure gauge, during spraying.	Suction filter clogged
	Paint cannot be worked in this state. Due to its properties the paint clogs the valves (inlet valve) and the delivery rate is too low.		Dilute the paint
	Unit reached pressure, but the pressure collapses during spraying. pressure gage still shows high pressure	Clogged filter do not let enough paint pass	Check/clean the (high-pressure filter) gun filter
			Tip clogged
	Unit does not generate the max. pressure possible. Paint nevertheless exits at the return hose.	Relief valve defective	Contact your Titan dealer or a Titan authorised service centre.

11 SPARE PARTS AND ACCESSORIES

11.1 ELITE 3100 ACCESSORIES

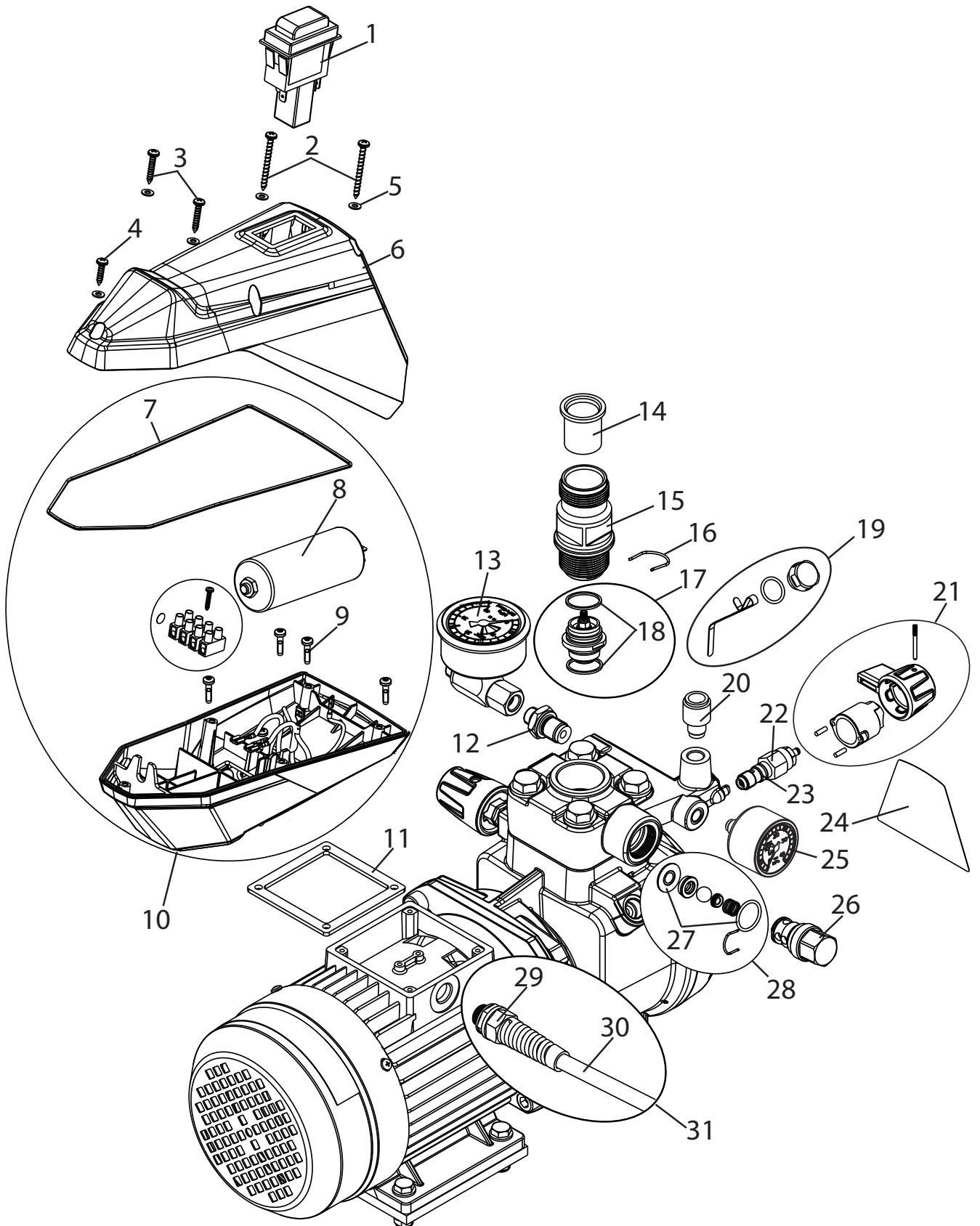
PART NO.	DESCRIPTION
SPRAY GUNS	
0538005	RX-80 with TR-1 517 Tip
0538020	RX-Pro with TR-1 517 Tip
0550060	S-3 spray gun
0550070	S-5 spray gun
0289013	M-4 spray gun
0538217	RX-Pro, small grip
0538218	RX-Pro, medium grip
0538219	RX-Pro, large grip
SPRAY TIPS AND ACCESSORIES	
662-XXX	SC-6+ Tip*
330-XXX	TR-1 HEA Tip*
695-XXX	TR-1 Tip*
692-XXX	TR-2 Tip*
671-XXX	Fine Finish Tip*
0289228	Tip Guard
651-139	Tip Swivel
661-020	Tip seat and seal kit (5 pack)
FILTERS	
0089957	Coarse Mesh Filter (Green)
0089958	Medium Mesh Filter (White)
0089959	Fine Mesh Filter (Yellow)
0089960	Extra Fine Mesh Filter (Red)

PART NO.	DESCRIPTION
EXTENSIONS	
2418848	5" (12.5 cm) Tip Extension
2418850	10" (25 cm) Tip Extension
2418851	20" (50 cm) Tip Extension
2418852	30" (75 cm) Tip Extension
2418862	3' (0.9 m) Extension Pole
2418863	6' (1.8 m) Extension Pole
AIRLESS HOSE AND ACCESSORIES	
2432927	1/4" x 15 m Airless Hose
316-506	3/16" x 1.5 m Whip Hose
490-012	1/4" x 1/4" hose connector
0508239	High Pressure Fluid Gauge
LUBRICANTS AND CLEANERS	
2412657	Liquid Shield™ 946 ml
314-480	Piston Lube™, 240 ml
700-926	Piston Lube™, 946 ml
0297055	Pump Shield™, 355 ml
VARIOUS	
2404445	Innerfeed Roller
0341267	Hopper 5l
2393 123	Suction system (flexible)
0097 531	Filter bag, mesh width 0,3 mm
*	Go to www.titantool-international.com for tip sizes

SPARE PARTS AND ACCESSORIES

11.2 SPARE PARTS ELITE 3100

ITEM	ORDER NO.	DESIGNATION
1	9953696	Motor protection switch
2	2393002	Oval-head tapping screw 4,2 x 45 (2 pcs.)
3	2393003	Oval-head tapping screw 4,2 x 25 (2 pcs.)
4	2388381	Oval-head tapping screw 4,2 x 22
5	2388377	Disc
6	2411145	Cover
7	2304608	Round cord
8	2393015	Capacitor 25uf 400V assy.
9	2393018	Oval-head screw M4x18 (4 pcs.)
10	2432886	Terminal box assy. (pos. 7-9)
11	2369517	Motor seal
12	2369436	Reducing double nipple
13	0340257	Pressure gauge assy. AUS
14	2369454	Inlet
15	2388291	Inlet valve housing
16	2369455	Clamp
17	2393043	Inlet valve assy. (incl. pos. 18)
18	2369458	Sealing ring
19	2393044	Oil level measuring set
20	2369586	Fitting
21	2393047	Pressure relief knob assy.
22	2369631	Pressure relief valve (incl. pos. 23)
23	9971395	O-ring
24	2401314	Label Elite 3100
25	0252475	Pressure gauge assy. EU
26	2393102	Outlet valve housing assy.
27	2393105	O-ring and sealing ring
28	2393106	Outlet valve assy. (incl. pos. 27)
29	2388374	Cable gland
30	2394776 0341520	Mains cable EU Mains cable AUS
31	2400157 2400156	Mains cable assy. EU (pos 29-30) Mains cable assy. AUS (pos 29-30)

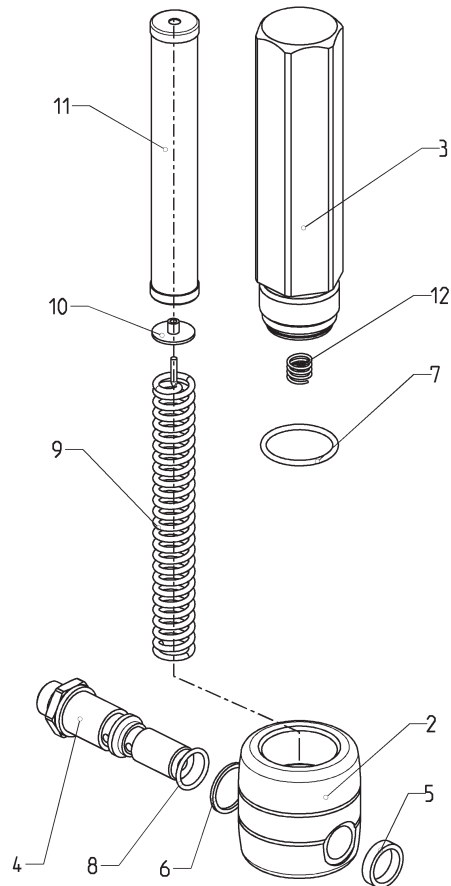


Spare parts diagram Elite 3100

SPARE PARTS AND ACCESSORIES

11.3 SPARE PARTS LIST HIGH-PRESSURE FILTER

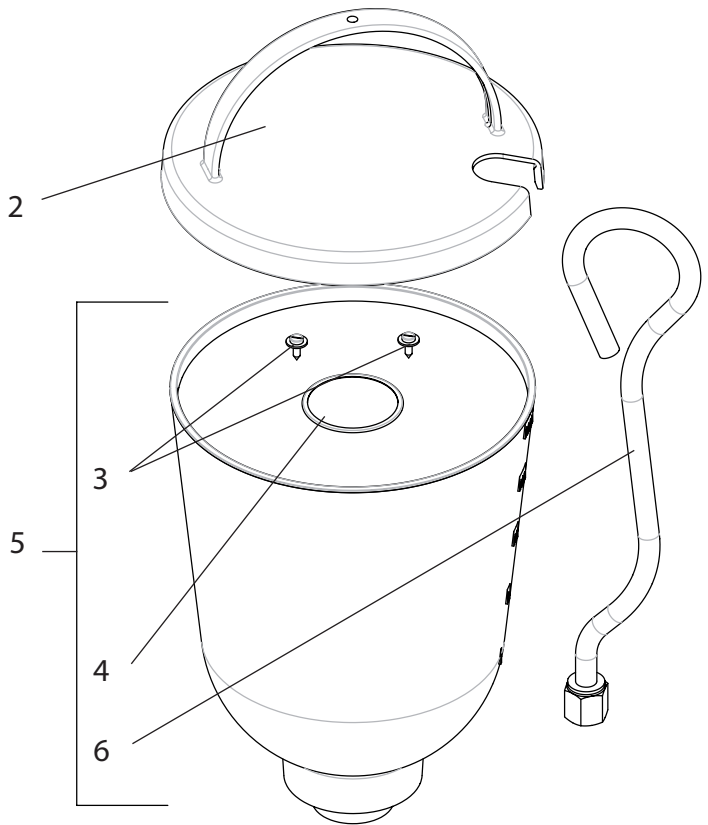
ITEM	ORDER NO.	DESIGNATION
1	0097 121	High-pressure filter HF- 01 compl.
2	0097 301	Filter block
3	0097 302	Filter housing
4	0097 303	Hollow screw
5	0097 304	Seal ring
6	9970 110	Seal ring
7	9974 027	O-ring 30x2 (PTFE)
8	9971 401	O-ring 16x2 (PTFE)
9	0508 749	Bearing spring
10	0508 603	Bearing ring
11	0508 748	Filter insert 60 meshes
	0508 450	Optional: Filter insert 100 meshes
	0508 449	Filter insert 30 meshes
12	9994 245	Pressure spring



Spare parts diagram high-pressure filter

11.4 SPARE PARTS LIST HOPPER

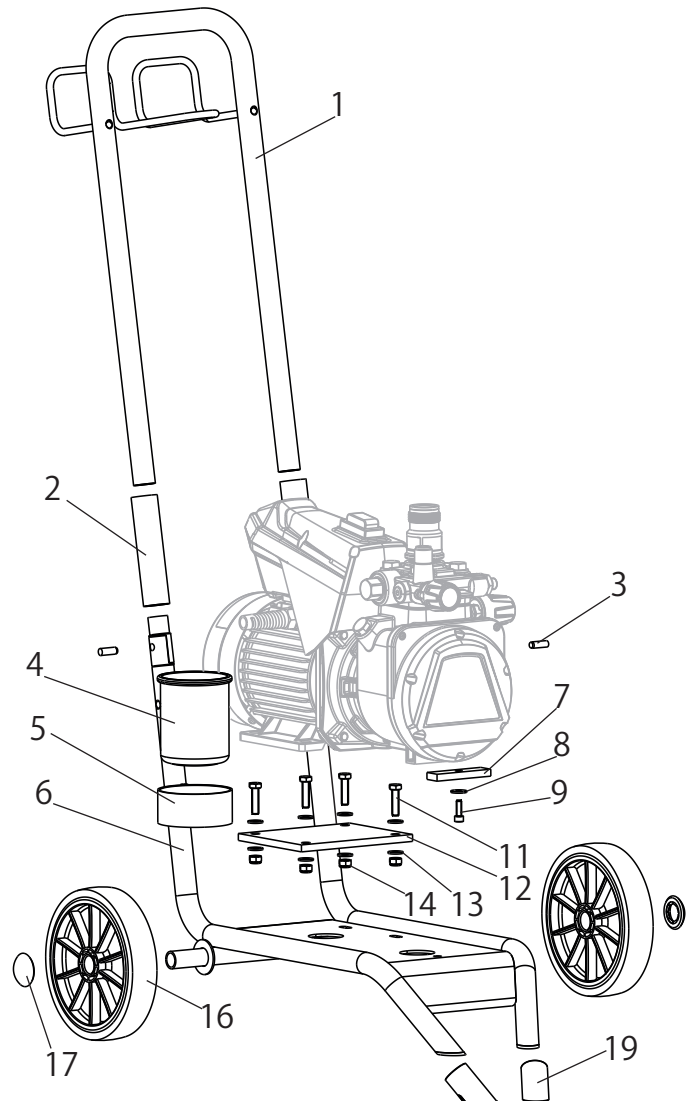
ITEM	ORDER-NO	DESIGNATION
1	0341 267	Hopper 5l, assy. (pos. 2-6)
2	0340 429	Cover
3	9902 313	Sheet metal screw 3,9x13 (2)
4	0003 756	Filter disk, mesh width 0,4 mm
5	0340 265	Hopper
6	0340 908	Return pipe



Spare parts diagram hopper

11.5 SPARE PARTS LIST TROLLEY

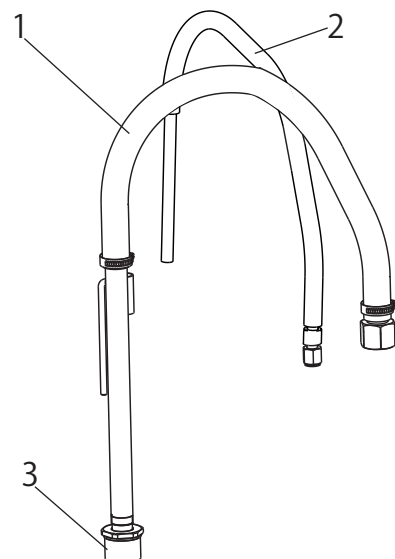
ITEM	ORDER NO.	DESIGNATION
1	2369570	Handle
2	13806	Sleeve
3	2396299	Half-hollow rivet
4	2369585	Cleaning cup
5	2393786	Cleaning cup holder
6	2369550	Bottom frame, cart
7	2369578	Foot, damping
8	9920304	Washer
9	2391181	Hexagon socket head cap screw
10	2393118	Foot, damping assy. (pos. 7-9)
11	9900118	Hexagon screw
12	2369545	Plate, damping
13	9920102	Washer
14	9910208	Hexagon nut
15	2393119	Plate, damping assy. (pos. 11-14)
16	2369556	Wheel
17	9994950	Wheel cap
18	2393121	Wheel assy. (pos. 16, 17)
19	2388543	Foot



Spare parts diagram trolley

11.6 SPARE PARTS LIST SUCTION SYSTEM

ITEM	ORDER NO.	DESIGNATION
	2393123	Suction system assy.
1	2390605	Suction hose assy. (incl. filter)
2	2390606	Return hose assy.
3	2323325	Suction filter



Spare parts diagram suction system