

batmatic

FORWARD PLATE COMPACTOR FPH1650 – FPR1650



Italia Star Com Due S.R.L.
Autostrada București - Pitești km. 13.2
Loc. Chiajna - Ilfov
Tel: 021.433.03.27
Fax: 021.433.03.26
info@italiastar.ro www.italiastar.ro

FOREWORD

We thank You to choose a BATMATIC plate compactor. Your new machine is an useful and safety job's tool.

Observing the safety regulations and the instructions in this book there will not be physical injury and the plate will be always in good condition.

Worn-out machine parts are to be replaced as soon as possible. You will find the code numbers to order the spare parts in the chapter "Spare parts" in this instruction book.

INDEX

SAFETY INSTRUCTIONS FOR PLATE COMPACTORS.....	5
SAFETY	5
TRANSPORT AND LIFTING	5
MAINTENANCE	6
PERIODIC MAINTENANCE	6
FIRE	6
RESIDUAL RISK	6
CLIMBING ABILITY	7
FUNCTION	7
APPLICATIONS	7
OPERATION	8
CHECKS BEFORE STARTING	8
ENGINE STARTING (MANUAL)	8
ENGINE STOPPING (MANUAL)	8
ENGINE OIL	8
AIR FILTER (DRY)	9
AIR FILTER (OIL BATH)	9
MAINTENANCE	10
TROUBLE, CAUSE, SOLUTION	11
LUBRIFICANTS	12
ENGINE / EXCITER REVS	12
TECHNICAL DATA	13
SOUND MEASUREMENTS	13
VIBRATION MEASUREMENTS	13
EXPLODED VIEW	14
WARRANTY	21
EC DECLARATION OF CONFORMITY	22

SAFETY INSTRUCTIONS FOR PLATE COMPACTORS

SAFETY

- Plate compactors must only be operated by person who:
 - * is at least 18 years old;
 - * is physically and mentally fit for this job;
 - * may be expected to carry out the job he's charged with carefully.The employer must directly assign people who guide plate compactor.
- Plate compactors must only be used for compaction jobs observing safety and operating instructions.
- People who work with plate compactors must know everything regarding safety instructions.
- Do not take drugs or drink alcohol before using plate compactors.
- Always wear appropriate protective clothes (ear protections, gloves, protecting shoes and helmet).
- Do not alterate the operation devices of the plate compactor.
- Do not leave control elements during compaction.
- Store the compactor with engine off in a safe place.
- Always refill fuel tank when the engine is off. Do not allow fuel to come into contact with the hot parts of compactor and engine.
- Do not smoke when using compactor. Keep the compactor out of open flames.
- Always check fuel tank cap. If there is a fuel cock, shut it off when the engine is not working.



WARNING

If fuel tank leaks, replace it immediately: A fuel tank in bad conditions could explode.

- Do not use the compactor in places where there are gaseous exhalations.
- Do not use the machine indoors or in an enclosed area unless inadequate ventilation.
- Always wear appropriate protective clothes.
- When the work area is near slopes, the compactor could turn over.
- When you use compactor in reverse and in a narrow place, the operator must be sideways from the handle in order to avoid stumbling.
- Always operate in safe conditions in order to avoid accidents.
- Always operate in maximum stability conditions.
- Use transport wheels only for movements in yard. In all the other situations they must be removed.
- Always make sure of the proper functioning of the safety and control devices.
- If there are any problems, stop immediately the machine and inform the person responsible of the yard.

TRANSPORT AND LIFTING

- Do not lift the compactor when is running.
- Check that lifting points are not damaged.
- For loading and unloading the compactor, appropriate lifting-gear are necessary which have to be used on the lifting points.
- Be sure that the ramps are fixed and check the tolerable weight in order to avoid turnovers.
- Do not transport compactors when engine is running.
- Tie the machine on vehicle to prevent sliding or tipping over.
- For long transports, empty completely the fuel tank and close it.



WARNING

Do not lift or hook the plate compactor by the handle.

MAINTENANCE

- Use original spare parts only.
- Do not alterate the operation devices of plate compactor.
- Do not turn the engine on without air filter.

**WARNING**

Modifications in this machine are subject to the express approval of BATMATIC which in case of non observance will refuse all liabilities and all warranties.

- Do not make maintenance operations when machine is running or when engine is on.
- As soon as maintenance and repair jobs have been completed, all safety devices have to be properly reinstalled.

PERIODIC MAINTENANCE

Regular maintenance is required for a good performance of the compactor.

FIRE

In the case of a fire in the machine, if possible use an AB class powder extinguisher.

RESIDUAL RISK

Plate compactors are designed for absorbing a large part of machine vibrations. Depending on the operation, the ground conditions and exposure time, the recommended limits for hand-arm vibrations may be exceeded.

**WARNING**

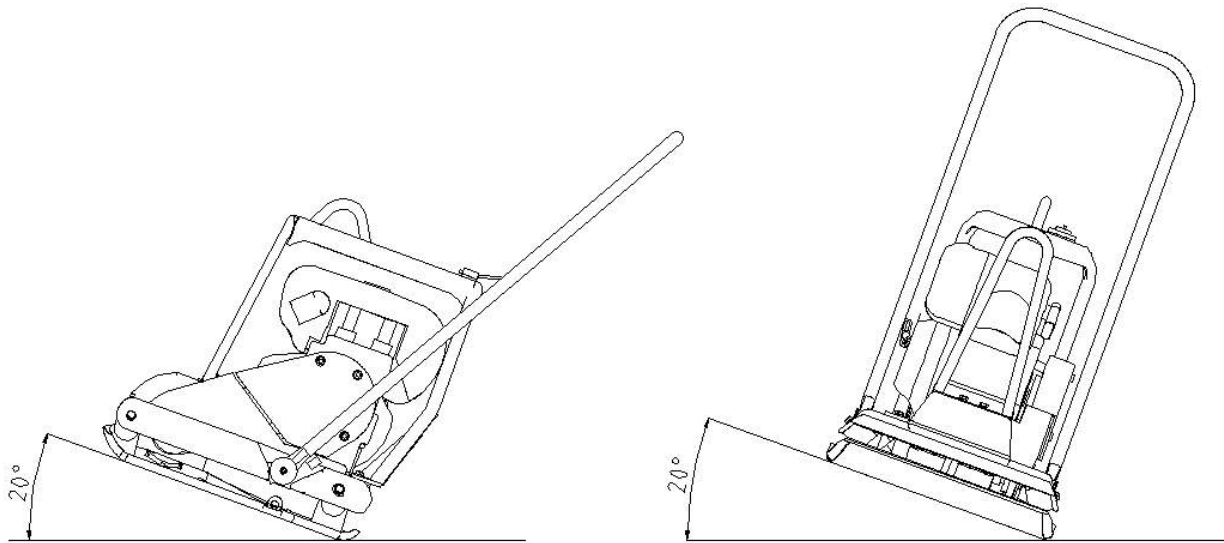
Do not use the machine on grounds already compacted.

Long exposure to vibrations can damage the hands and wrists. Do not use the machine if you experience discomfort, cramp or pain and consult a doctor before restart working with the machine.

Long exposure to loud noise without ear protector can cause permanent damage to hearing.

Please also observe regulations valid in Your yard.

CLIMBING ABILITY



FUNCTION

The vibration required for tamping is produced by the exciter which is on the compacting plate.

The engine starts the exciter and the torque is transmitted by the centrifugal clutch and by the belt.

In order to allow the idling of the drive engine, the centrifugal clutch, at low engine speeds, interrupts the flow of power to exciter. The compactor must always be used with the gas handle in the "OPERATIVE" position.

The engine supporting and the compacting plates are connected by 4 shockmount, which are mounted to avoid that vibrations reach the operator.

APPLICATIONS

The compactor FP1650 is suitable for asphalted road maintenance, small tamping garden jobs. Only use the machine for the purpose for which it is intended.

OPERATION

CHECKS BEFORE STARTING

- Before start using compactor, carefully read instruction manual.
- Engine oil level
Check oil level using the proper dipstick. If necessary refill with SAE 15 W 40 oil.
- Air filter
Check that air filter is clean and in good condition. If necessary clean or replace it.
- Fuel
Never use oil/gasoline mixture or dirty fuel. Avoid getting dirt, dust or water into fuel tank. Refuel avoiding leaks on engine.

ENGINE STARTING (MANUAL)

- Open the fuel valve.
- Move the throttle lever to 3/4 position.
- Turn the choke lever (if present).
- Turn the engine switch on the ON position.
- Pull the starter grip lightly until resistance is felt, then pull briskly.

Pull hand crank until it starts, in order to avoid counterblows

- As the engine warms up, gradually move the choke lever (if present).
- Warm up the engine at the minimum speed for some minutes.
- The compactor will start moving when the throttle lever is in operative position.

ENGINE STOPPING (MANUAL)

- Move the throttle lever to the minimum position. Warm up the engine at the minimum speed for some minutes.
- Turn the engine switch on the OFF position.



WARNING

Never operate the engine switch when the engine is at the maximum speed.

- Turn the fuel valve on the OFF position.

ENGINE OIL

- Check oil level using the proper dipstick, if necessary refill with SAE 15 W 40 oil.

Oil change

- Drain oil at warm engine.
- Refill with SAE 15W40 oil.



WARNING

Only use oil with characteristics advised by the manufacturer engine (see engine book).

AIR FILTER (DRY)**WARNING**

Clean air filter daily in order to avoid engine damages.

- Open air cleaner and remove element.
- Lightly and repeatedly tap the element on a hard surface to eliminate all excess dirt.
- Clean the element.
- Refit the air filter. Do not run the engine without the air filter.

AIR FILTER (OIL BATH)**WARNING**

Clean air filter daily in order to avoid engine damages.

- Open air cleaner and remove upper element.
- Wash the upper filtering element with soap and water.
- Clean the upper bowl.
- Remount the upper filtering element.
- Remove the lower filtering element.
- Clean and dry filtering element.
- Drain and clean bowl.
- Fill with engine oil up to level mark.
- Reassemble air cleaner.

**WARNING**

Never use gasoline or low flash point solvents for cleaning the air filter to avoid fire and explosions.



Do not disperse oil, batteries, fuel and dangerous substances in the environment, as they have high pollution power.

MAINTENANCE

PARTS	MAINTENANCE	INTERVAL
Air filter	Check filter, clean or replace if necessary Check filter oil level (only oil bath models)	daily
Fuel tank	Check fuel tank and fuel cap lid. If necessary replace.	
Engine	Check oil level, refill if necessary	
Engine	Check engine RPM	
Exciter	Check exciter lid	
Engine	First oil change	After 20 h
Engine	Clean spark plug	Monthly
V-Belt	Check V-belt tension	Monthly
Fuel Tank	Check fuel filter, replace if necessary	After 100 h
Engine	Oil change	
Exciter (bath oil only)	Check oil level, refill if necessary	After 150 h
Exciter (bath oil only)	Oil change	After 250 h

TROUBLE, CAUSE, SOLUTION

TROUBLE	POSSIBLE CAUSE	SOLUTION
The engine works properly but the machine does not vibrate	The transmission belt is broken	Replace the belt
	The wear and tear has caused the belt to loosen up	
	The centrifugal clutch has broken	Replace the centrifugal clutch
Reduced or irregular speed	The engine rpm is not correct	Verify that during compaction gas lever is in "OPERATIVE" position
		Reset the number of engine rpm
	The transmission belt has loosened up	Tension the transmission belt and, if necessary, replace it
The engine rpm are low but the exciter does not stop	Centrifugal clutch malfunction	Repair the centrifugal clutch and, if necessary, replace it
The exciter heats up to over 90° (bath oil only)	There is too much of oil in the exciter	Top up the oil level. Check whether the oil seal has been damaged; if necessary replace it
The engine works with difficulty and the exciter is too noisy and it stops or slows down	Mechanical block of the exciter (bearings, shaft)	Remove the element causing the failure or, if necessary, replace the exciter
The engine turns off or does not work properly	Fuel tank empty	Add fuel
	Oil lack	Add oil
	Dirty air filter	Clean air filter, if necessary replace it
	Engine damaged	Contact an engine service center

LUBRIFICANTS

	Model	Quantity	Type
Exciter	FP 1650	Dry Exciter	-----
Engine	All models	See engine instructions	SAE 15W40

ENGINE / EXCITER REVS

Model	Engine	Exciter
FP 1650	3500 – 3550	5350 – 5400



WARNING

Set the rpm as per the above table. A different rpm will not make the compactor working properly and could break it. If the set rpm is changed, the warranty will not be recognized.

TECHNICAL DATA

Model	FPR1650	FPH1650
Dimensions plate Width x Length	mm 500 x 560	
Operating weight	With Lifting Hook	With Rollbar With Rollbar and Water Tank
FPH1650	kg 88	kg 89 kg 91
FPR1650	kg 87	kg 88 kg 90
Working speed	25 m/min	
Max climbing ability	20 %	
Frequency	90 Hz	
Centrifugal force	16 kN	
Transmission	Centrifugal clutch / belt	
Engine	Air-cooled single-cylinder 4 stroke	
	Subaru EX 16	Honda GX 160
Engine power	kW 3,4 (HP 4,5)	kW 3,6 (HP 4,8)
Displacement	126 cm ³	163 cm ³
Fuel	Petrol	
Fuel consumption	1,4	1,4
Fuel tank capacity	2,7 ltrs	3,1 ltrs

SOUND MEASUREMENTS

The product has been produced in accordance with the standard 2000/14/CE, procedure I annex VI.

Measured sound power level **99** [dB(A)] and guaranteed sound power level **103** [dB(A)] on a significant equipment.

VIBRATION MEASUREMENTS

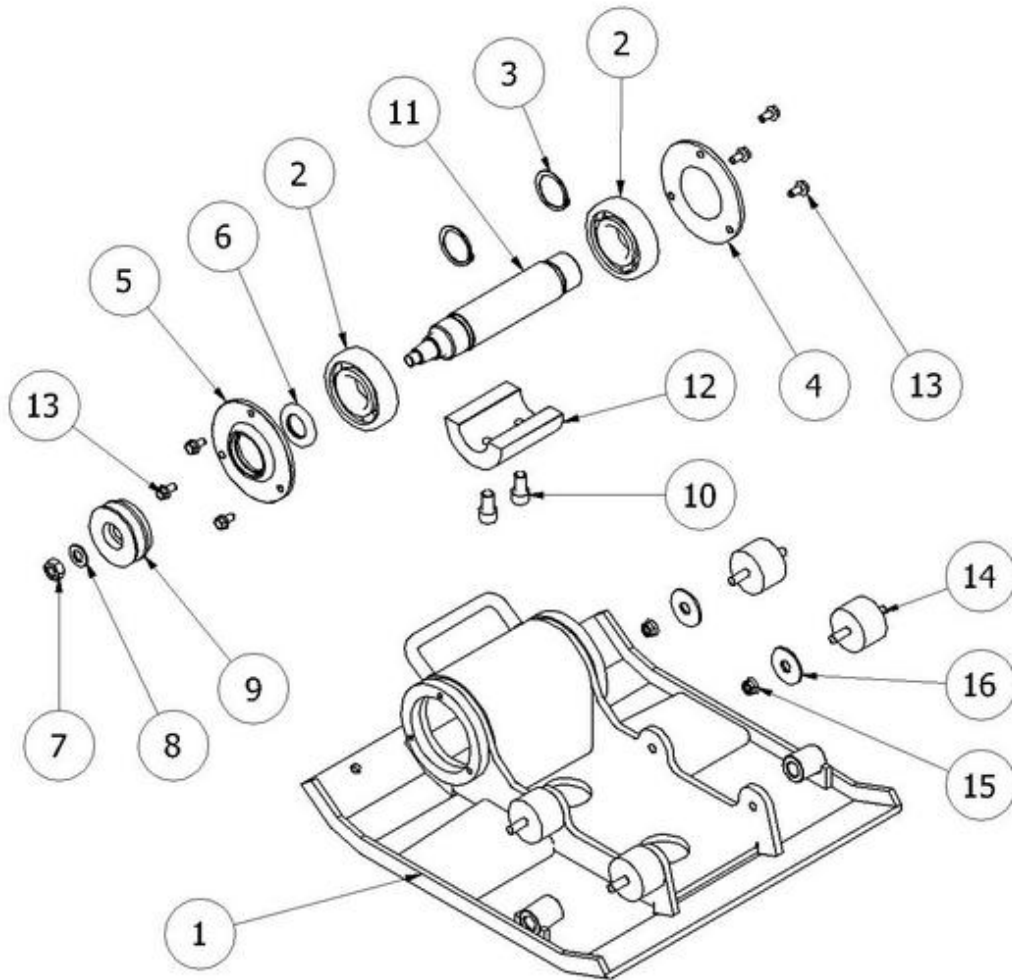
Products are tested for hand/arm vibration level in accordance with annex D prEN500-4:2001

The hand/harm vibration level is **9,2** m/s²

The plate compactor has been tested on a "macadam" surface, produced with not cleaned stone crusher grit, with 16 mm medium diameter (with components which have diameter that goes from 10 to 20 mm).

EXPLODED VIEW

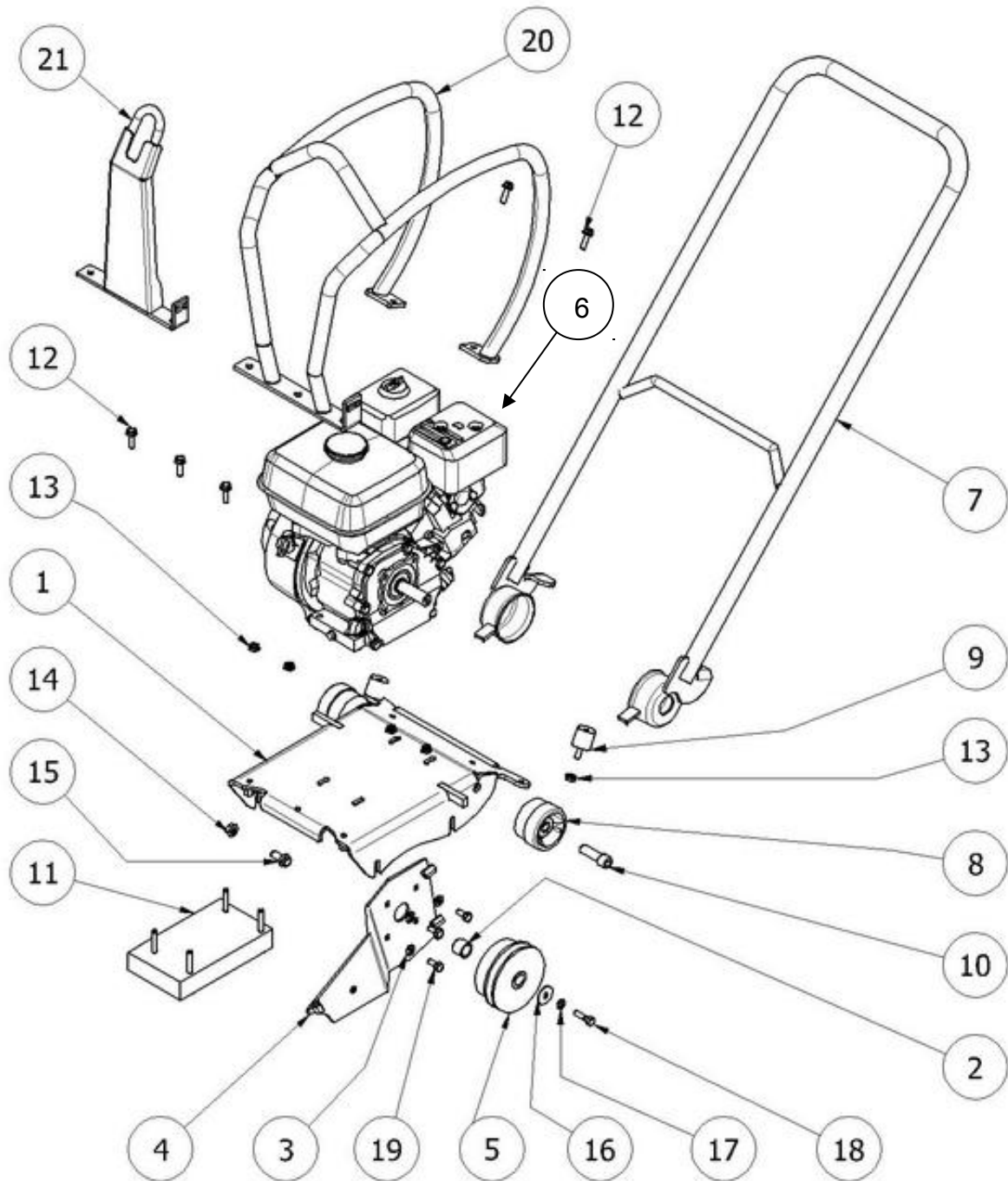
EXCITER – BASE PLATE



EXCITER – BASE PLATE

POS	CODE	DESCRIPTION	Q.TY
1	560132	BASE PLATE FP1650	1
2	151106	BEARING NSK 6309 2RS C3 VV	2
3	151102	SEEGER E45 UNI 7435	2
4	560071	CLOSED EXCITER COVER	1
5	560068	OPENED EXCITER COVER	1
6	131043	OILSEAL 30X55X7 BA	1
7	151456	NUT M14 UNI5588	1
8	151472	WASHER. M14 UNI 6592 ZN	1
9	560148	EXCITER PULLEY	1
10	151114	SCREW M14X25	2
11	560090	EXCITER SHAFT	1
12	560167	16 KN WEIGHT FP1650	1
13	152040	SCREW FLG DIN 6921 M8X16 8.8 ZN	6
14	131104	SHOCKMOUNT MM D57X37 M10X25 60 SH	4
15	151904	FLANGED NUT DIN 6923-M10	4
16	151154	WASHER M14X48	4

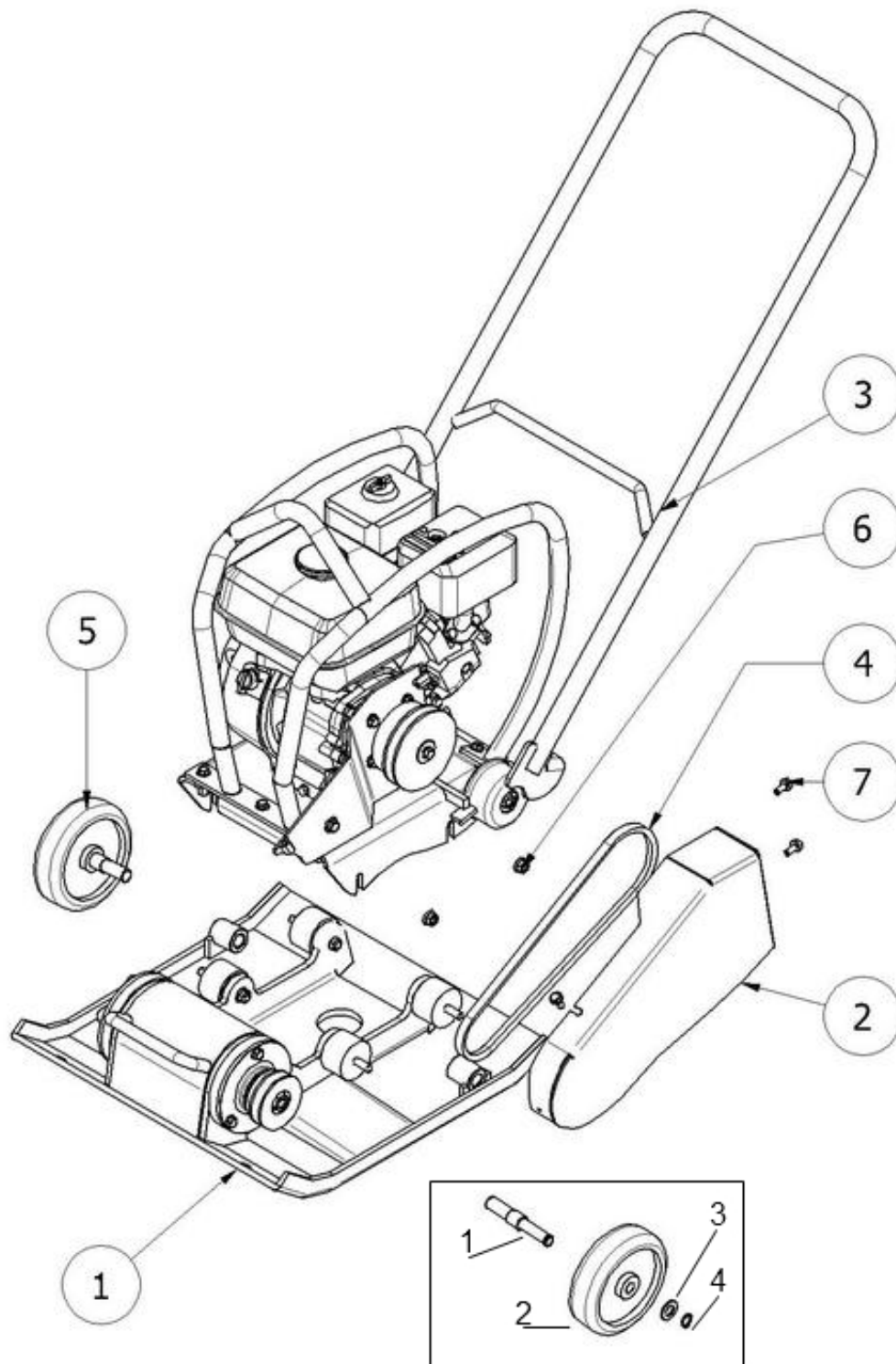
ENGINE SUPPORT



ENGINE SUPPORT

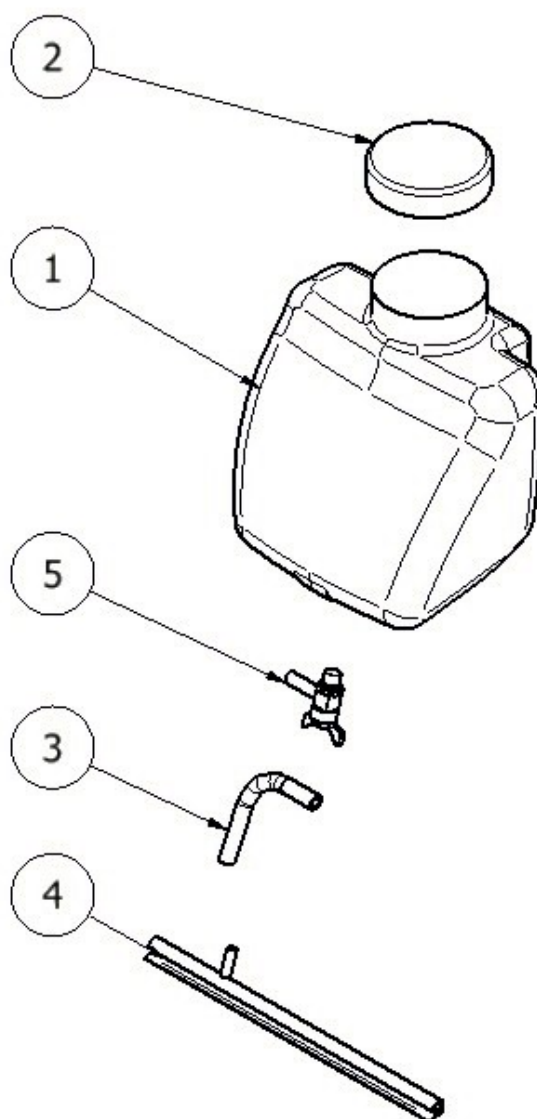
POS	CODE	DESCRIPTION	Q.TY
1	560168	ENGINE SUPPORT	1
2	560149	PULLEY SPACER FOR ENGINE SUPPORT	1
3	151199	WASHER M 8 UNI 6592 ZN	4
4	560184	BELT PROTECTION HOLDER	1
5	152286	CENTRIFUGAL CLUTCH 19,05 IORI	1
6	181139	HONDA ENGINE GX 160	1
6	182273	SUBARU ENGINE EX 13	1
7	560176	HANDLE	1
8	560037	HANDLE SHOCKMOUNT DIAM. 75 - 50 SH	2
9	131927	SHOCKMOUNT PM 30X20 M8X23 60 SH	2
10	151359	SCREW TCEI M14X 45 12.9 UNI 5931	2
11	560152	WEIGHT FOR ENGINE SUPPORT	1
12	152038	SCREW TE FLG M8X25 8.8 ZN	5
13	151123	FLANGED NUT DIN 6923-M8	6
14	151904	FLANGED NUT DIN 6923-M10	1
15	152037	SCREW TE FLG M10X25 8.8 ZN	1
16	152192	WASHER M8X32	1
17	151807	CONTACT WASHER 8(8.2X18X1.4)ZN	1
18	151122	SCREW TE 5/16-24 UNF -1"1/4 UNF	1
19	151309	SCREW TE 5/16-24X3/4" 8.8 UNF	4
20	560169	ROLLBAR FOR WATER TANK	1
21	560198	LIFTING HOOK	1

VIBRATORY PLATE



VIBRATORY PLATE

POS	CODE	DESCRIPTION	Q.TY
1	-----	COMPL. BASE PLATE FP1650	1
2	560180	BELT PROTECTION	1
3	560154	ASSY ENGINE SUPPORT	1
4	131030	BELT A33	1
5	560203	WHEEL WITH AXLE	2
6	151904	FLANGED NUT DIN 6923-M10	4
7	152040	SCREW FLG DIN 6921 M8X16 8.8 ZN	3
1	560036	AXLE	2
2	131212	WHEEL	2
3	151472	WASHER	2
4	151816	SEEGER	2

WATER TANK**WATER TANK**

POS	CODE	DESCRIPTION	Q.TY
1	132062	WATER TANK	1
2	132254	WATER TANK CAP	1
3	132205	RUBBER HOSE	0,15 mt
4	560190	SPRINKLING PIPE FP1650	1
4	560145	SPRINKLING PIPE FP 1650 (valid until 31/12/12)	1
5	152276	WATER VALVE GAS RB9085 3/8-8	1
6	560175	NUT GAS 3/8 H15 CH 27 ZN (INSIDE WATER TANK)	1

WARRANTY

Your new BATMATIC Plate Compactor is warranted to the original purchaser for a period of one year (36 months) from the original date of purchase.

The BATMATIC warranty is against defects in design, materials and workmanship.

The following are not covered under the BATMATIC warranty:

1. Damage caused by abuse, misuse, dropping or other similar damage caused by or as a result of failure to follow assembly, operation or user maintenance instructions.
2. Alterations, additions or repairs carried out by persons other than BATMATIC or their recognized agents.
3. Transportation or shipment costs to and from BATMATIC or their recognized agents, for repair or assessment against a warranty claim, on any machine.
4. Materials and/or labor costs to renew, repair or replace components due to fair wear and tear.
5. Engine

BATMATIC and/or their recognized agents, directors, employees or insurers will not be held liable for consequential or other damages, losses or expenses in connection with or by reason of or the inability to use the machine for any purpose.

Warranty Claims

All warranty claims should firstly be directed to the local dealer, either by telephone, by fax, by email, or in writing.

USE ONLY GENUINE BATMATIC PARTS AND ACCESSORIES

For your own safety, the safety of others and the life of your machine

batmatic

EC DECLARATION OF CONFORMITY

WE

Batmatic srl
Via romitaggio 31
43010 Bianconese di Fontevivo (Parma) - Italia

HOLDER OF TECHNICAL DOCUMENTATION SHOWED
 DECLARE UNDER OUR SOLE RESPONSIBILITY THAT THE PRODUCT

Type	Forward Plate Compactor
Model	() FPH1650
Net installed power	kW 3,6
Model	() FPR1650
Net installed power	kW 3,4
Serial Number	
Brand	Batmatic
Applications	Asphalted road maintenance
Measured sound power level	99 [dB(A)]
Guaranteed sound power level	103 [dB(A)]

HAS BEEN PRODUCED IN ACCORDANCE WITH THE STANDARD 2000/14/CE, PROCEDURE I ANNEX VI

AND HAS BEEN PRODUCED IN ACCORDANCE WITH THE FOLLOWING STANDARDS:

2006/42/CE
 EN 500-1
 EN 500-4

AND WE AUTHORIZE

Saj Ferrante
 Batmatic srl
 Via romitaggio 31
 43010 Bianconese di Fontevivo (PR)

TO SERVE THE TECHNICAL DOCUMENTATION

Bianconese, li.....



Saj Ferrante
Presidente

Italia Star Com Due S.R.L.
Autostrada București - Pitești km. 13.2
Loc. Chiajna - Ilfov
Tel: 021.433.03.27
Fax: 021.433.03.26
info@italiastar.ro www.italiastar.ro