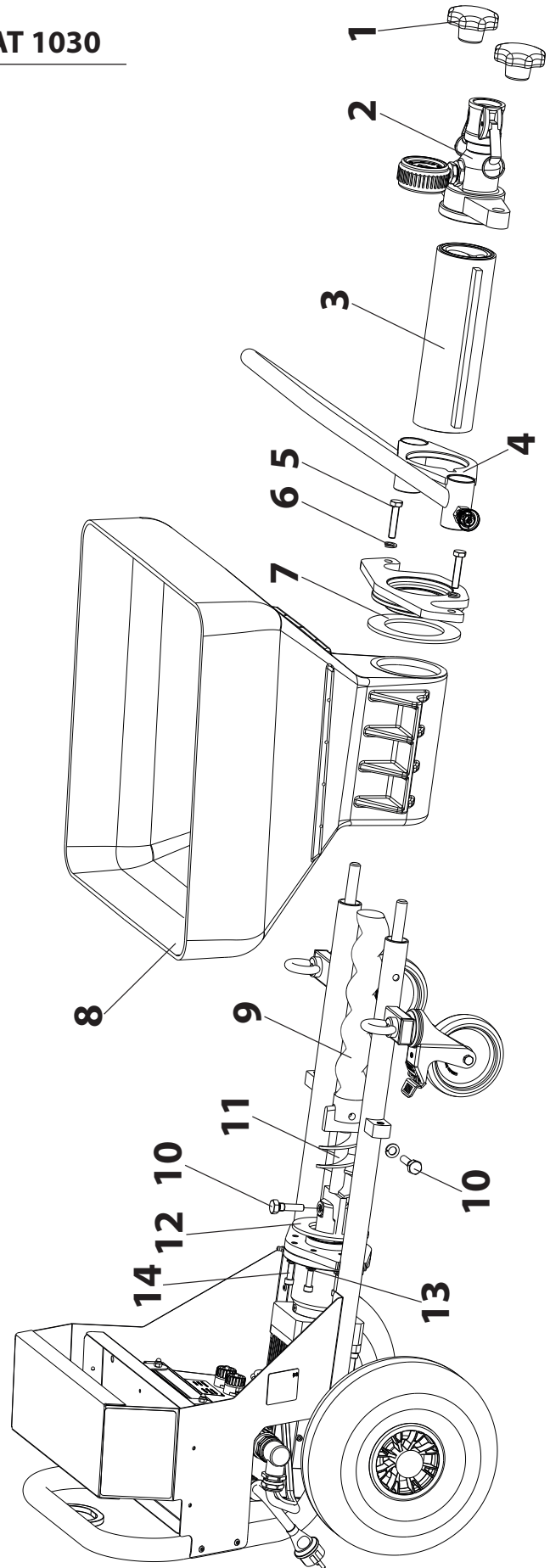




## 11 SPARE PARTS LIST FOR PLASTCOAT 1030

ITEM	ORDER NO.	DESIGNATION
8	2357594	Receptacle
9	348316	Rotor
10	348324	Screw
11	2360651	Feeder shaft
12	2360706	Rubber seal, motor
13	9921501	Spring washer
14	9900313	Cylinder head screw

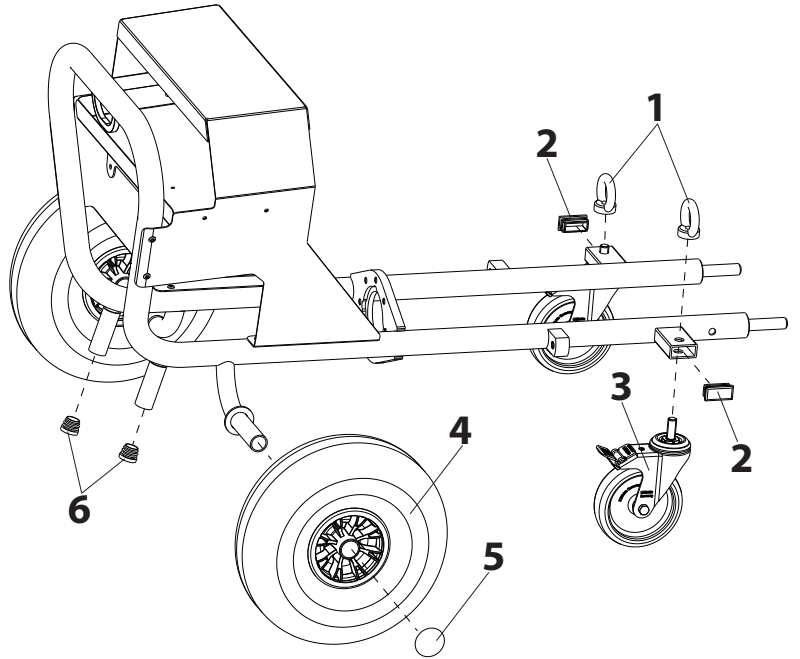
ITEM	ORDER NO.	DESIGNATION
1	9990368	Star knob nut
2	2362368	Outlet unit cpl.
3	348315	Pump casing
4	2361120	Anti-twist lock for stator
5	9900247	Hexagon head screw
6	9921507	Spring washer
7	2360707	Rubber seal, flange



SPARE PARTS LIST OF SPRAY LANCE

11.1 SPARE PARTS LIST FRAME

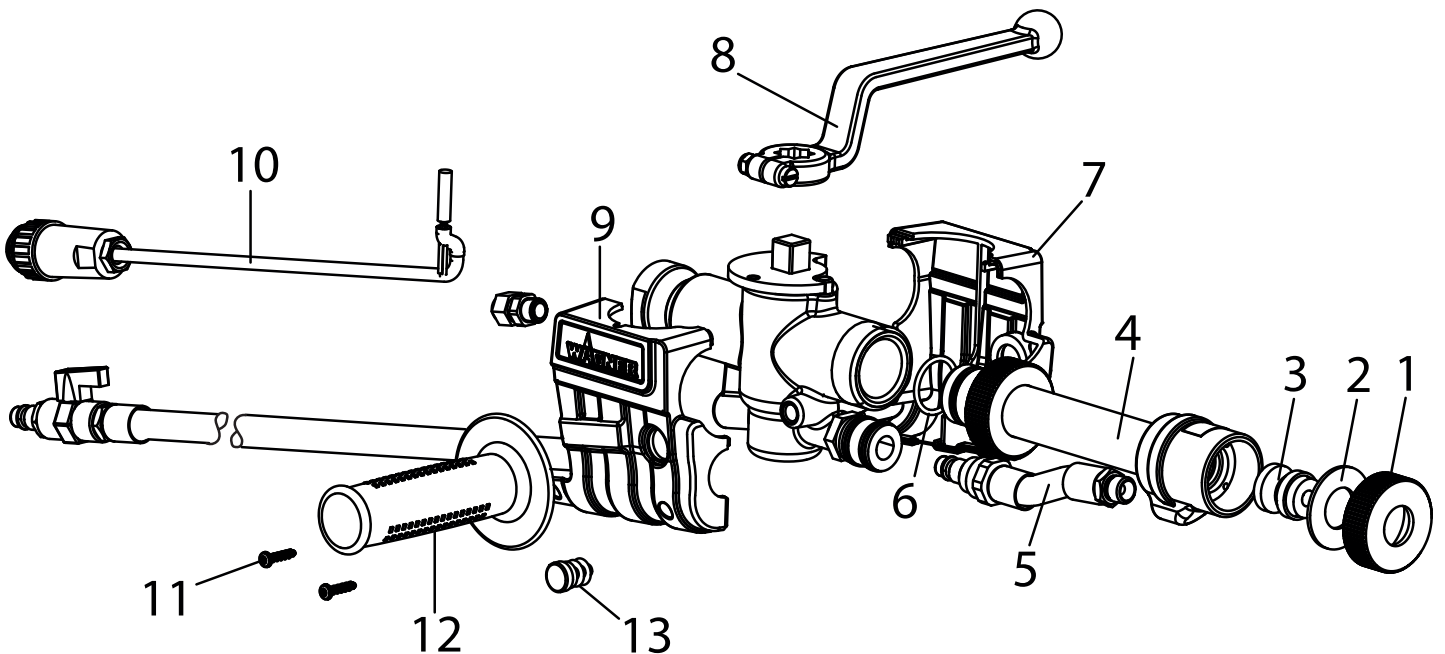
ITEM	ORDER NO.	DESIGNATION
1	3142039	Ring nut M12
2	3069013	Square head plug
3	2367604	Guide pulley
4	348349	Wheel
5	9994902	Wheel cap
6	2309787	Protective cap



12 SPARE PARTS LIST – SPRAY LANCE

ITEM	PART NO.	DESIGNATION
	2334 115	Automatic spray lance
	2322 199	Complete spray head (composed of positions 1-6)
1	2321 045	Union nut
2	0342 350	Sealing washer
3	0268 781	Texture tip 8 (standard)
6	2322 488	O-ring 25 x 2,5

ITEM	PART NO.	DESIGNATION
7	2323 764	Housing component, left
8	2319 220	Lever
9	2323 782	Housing component, right
10	0348 216	Reed sensor, cpl.
11	2336 554	Oval-head screw (2)
12	2324 716	Hand-grip
13	2336 221	Stoppers (2)



### 13 PLASTCOAT 1030 ACCESSORIES

ITEM	PART NO.	DESIGNATION	ITEM	PART NO.	DESIGNATION
1	2334 115	Automatic spray lance	10	0342 314	Fix coupling seal M 27
2	2334 120	Ceiling spray lance (150 cm)	11	2337 672	Angled spray head
3	2334 121	Rendering lance	12	0342 916	Cleaning needle
4	Texture tips for automatic spray lance and ceiling spray lance:		13	0342 330	Cleaning ball for DN 19
	0268 779	Texture tip 4		0342 331	Cleaning ball for DN 27
	0348 915	Texture tip 5		0342 332	Cleaning ball for DN 35
	0268 780	Texture tip 6	14	0342 329	Bottle brush for cleaning the inside of the outlet unit and spray lance
	0348 916	Texture tip 7	15	9992 824	Pump sliding means 500 ml
	0268 781	Texture tip 8 (standard)	16	0342 215	Hose holder
	0348 917	Texture tip 9	17	0342 241	Cleaning adapter M 27 – GK
	0268 782	Texture tip 10		0348 948	Cleaning adapter M 35 – GK
	0342 327	Texture tip 12	18	2311 921	Compressor VKM 592, 230 V~, 50 Hz, suction volume 590 l/min
	0342 328	Texture tip 15	19	2337 718	Compressor C330, 230 V~, 50 Hz, suction volume 330 l/min
	0268 905	Texture tip set 4, 6, 8, 10	20	2311 692	Control cable for automatic spray lance 14 m (no picture)
5	2362 235	Rendering tip 10	21	2312 136	Lubricant for mortar hose (Metylan wallpaper paste) 125g (no picture)
	2362 236	Rendering tip 12			
	0268 746	Rendering tip 14			
	0268 747	Rendering tip 16			
	0268 748	Rendering tip 18			
	0268 726	Rendering tip set 14, 16, 18			
6	2334 123	80-cm extension			
	2339 400	150-cm extension			
	2334 124	200-cm extension			
7	2335 394	Glue attachment			
8	2335 388	Fill/dosing attachment			
9	Mortar hose (including air hose and control cable) for automatic spray lance (2334115, 2334120, 2334121)				
	2334 131	Mortar hose DN 19 – 2 m, Connection V 27			
	0342 706	Mortar hose DN 19 – 10 m, Connection V 27			
	0348 930	Mortar hose DN 19 – 20 m, Connection V 27			
	0348 912	Mortar hose DN 27 – 10 m, Connection V 27			
	0348 946	Mortar hose DN 35 – 13,3 m, Connection V 27			



## PlastCoat 1030 Accessories illustration

