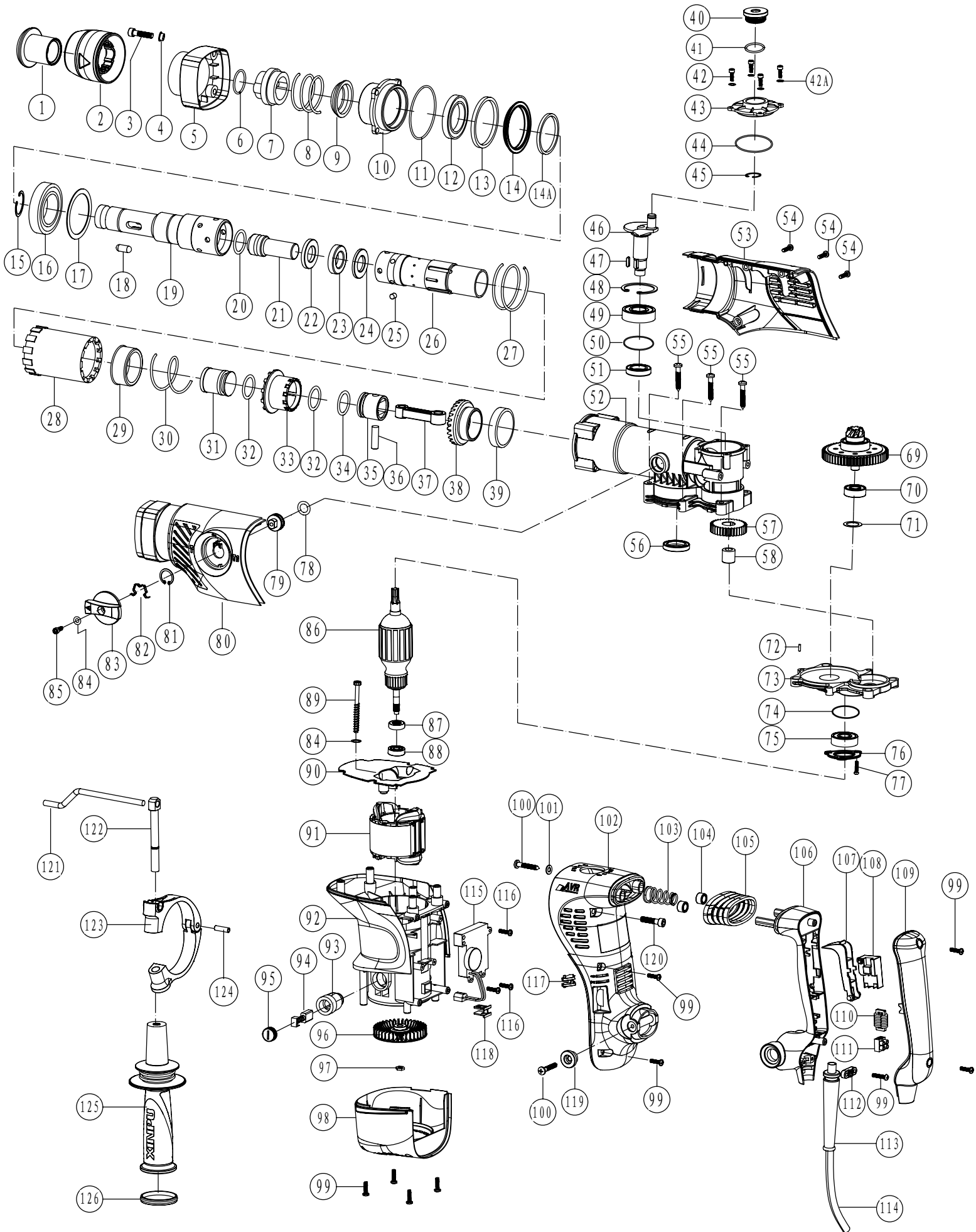


XP-R48VA Rotary Hammer Part Char



XP-R48VA Rotary Hammer Parts List

| XP-No | Item No. | Part Describe | Quantity | XP-No | Item No. | Part Describe | Quantity |
|------------|----------|--|----------|-----------|----------|--|----------|
| 88264142 | 1 | Turn Staff Armor | 1 | 88234013 | 58 | Needle Bearing BK1010 | 1 |
| 88264144 | 2 | Flex Sheath | 1 | 88275018 | 69 | Clutch Compages | 1 |
| 88210134 | 3 | Hex .Socket Bolt M6x25(12.9) | 4 | 88237004 | 70 | Ball Bearing 629 (2RZ C2) | 1 |
| 88224134 | 4 | Distance Piece M6 | 4 | 88224016 | 71 | 629 Bearing Washer $\Phi 25 \times \Phi 20 \times 0.5$ | 1 |
| 88264145 | 5 | Front shade | 1 | 88221017 | 72 | Pin $\Phi 5 \times 14$ | 1 |
| 88224019 | 6 | Steel Wire Block Ring $\Phi 2 \times \Phi 25.5$ | 1 | 88290099 | 73 | Inner Cover | 1 |
| 88275001 | 7 | Lock Bead Sheath | 1 | 88264028 | 74 | O-Ring $\Phi 1.5 \times \Phi 31.5$ | 1 |
| 88224022 | 8 | Lock Bead Sheath Spring $\Phi 2.5 \times \Phi 42.5 \times 74$ | 1 | 88237005 | 75 | Ball Bearing 6201 DD | 1 |
| 88224006 | 9 | Spring Seat | 1 | 88224017 | 76 | 6201 Bearing Hold Down Plate | 1 |
| 88290097 | 10 | Brainpan | 1 | 88210106 | 77 | Embedding Screws M4x8 | 3 |
| 88264003 | 11 | O-Ring $\Phi 1.5 \times \Phi 60$ | 1 | 88264026 | 78 | Fluorin O Ring $\Phi 2.5 \times \Phi 15$ | 1 |
| 88264004 | 12 | Oil Seal Ring $\Phi 34.5 \times \Phi 53 \times 7$ | 1 | 88275024 | 79 | Dial Staff Sheath | 1 |
| 88264005 | 13 | Spring Washer $\Phi 61 \times \Phi 52.5 \times 4.5$ | 1 | 88264148 | 80 | Left Cover | 1 |
| 88224007 | 14 | "L" type Washer | 1 | 88210094 | 81 | Retaining Ring $\Phi 20$ | 1 |
| 88310013 | 14A | Woolen Washer $\Phi 50 \times \Phi 34.5 \times 5.5$ | 1 | 88224133 | 82 | shrapnel | 1 |
| 88210091 | 15 | Retaining Ring $\Phi 35$ | 1 | 88264149 | 83 | Function Knob | 1 |
| 88237001 | 16 | Ball Bearing 6007 (2RS C3) | 1 | 88210090 | 84 | Flat Washer $\Phi 5$ | 3 |
| 88224008 | 17 | Vibration Reducing Washer $\Phi 62 \times \Phi 48.5 \times 1$ | 1 | 88210101 | 85 | Hex .Socket Bolt M5x10 | 1 |
| 88224009 | 18 | Lock Staff Bead $\Phi 8 \times 19.3$ | 2 | 88280127 | 86 | Armature 220-240V | 1 |
| 88275002 | 19 | Hammer Staff Sheath | 1 | 88243033 | 87 | Magnetism Inductorium | 1 |
| 88264178 | 20 | Fluorin O Ring $\Phi 18 \times \Phi 3.5$ | 1 | 88236001 | 88 | Ball Bearing NMB 608 D | 1 |
| 88275003 | 21 | Impact Hammer | 1 | 88210043 | 89 | Tapping Screw ST4.8x65 | 2 |
| 88275004 | 22 | Washer A $\Phi 35.7 \times \Phi 19.6 \times 5$ | 1 | 88264150 | 90 | Fan Guide | 1 |
| 88264007 | 23 | Buffering Washer $\Phi 35.5 \times \Phi 19.7 \times 8$ | 1 | 88280128 | 91 | Stator 220-240V | 1 |
| 88275005 | 24 | Washer B $\Phi 35.7 \times \Phi 19.6 \times 3.5$ | 1 | 88264151 | 92 | Housing | 1 |
| 88224010 | 25 | Cylinder Lock Bead $\Phi 5.8 \times 6$ | 4 | 88244007 | 93 | Brush Holder | 2 |
| 88275006 | 26 | Cylinder | 1 | 88244013 | 94 | Carbon Brush | 2 |
| 88224023 | 27 | Flower Trough Sheath Spring $\Phi 2.5 \times \Phi 53.5 \times 39$ | 1 | 88244006 | 95 | Brush Cap | 2 |
| 88264008 | 28 | Flower Trough Sheath | 1 | 882890524 | 96 | Fan | 1 |
| 88224011 | 29 | Spring sheath | 1 | 88210206 | 97 | M8x1x3.8 Nut | 1 |
| 88224024 | 30 | Dial Sheath Spring $\Phi 2.5 \times \Phi 41 \times 58$ | 1 | 88264152 | 98 | Fan Cover | 1 |
| 88275007 | 31 | Impact Piston | 1 | 88210038 | 99 | Tapping Screw ST4.2x18 | 12 |
| 88264009 | 32 | Fluorin O Ring $\Phi 3.5 \times \Phi 23$ | 2 | 88210119 | 100 | Machine Screw ST5.5x25 | 4 |
| 88275008 | 33 | Dial Sheath | 1 | 88210201 | 101 | Flat Washer $\Phi 5.5 \times \Phi 14 \times 1.6$ | 2 |
| 88264010 | 34 | Fluorin O Ring $\Phi 1.5 \times \Phi 23$ | 1 | 88264153 | 102 | Main Handle Seat | 1 |
| 88264011 | 35 | Gas Press Piston | 1 | 88223057 | 103 | Shock Absorption Spring | 1 |
| 88223020 | 36 | Piston Pin $\Phi 8 \times 26$ | 1 | 88264107 | 104 | Shock Absorption Ferrule | 2 |
| 88264012 | 37 | Connecting Rod Ass' y | 1 | 88264143 | 105 | Shock Absorption Jacket | 1 |
| 88275009 | 38 | Big Cone-shaped Gear | 1 | 88264154 | 106 | Main Handle | 1 |
| 88275012 | 39 | Oiliness Bearing $\Phi 40 \times \Phi 50 \times 13$ | 1 | 88264156 | 107 | Switch Trigger | 1 |
| 88261055 | 40 | Oil Tank Cover | 1 | 88244035 | 108 | Switch | 1 |
| 88263126 | 41 | Rubber Washer $\Phi 31 \times \Phi 25 \times 1.2$ | 1 | 88264155 | 109 | Main Handle Cover | 1 |
| 88210188 | 42 | Hex. Socket Bolt M4x12(12.9) | 4 | 88244008 | 110 | Electricity Feels | 1 |
| 88210111 | 42A | Flat Washer $\Phi 4$ | 4 | 88210076 | 111 | Rivet | 2 |
| 88264146 | 43 | Shell cover | 1 | 88261010 | 112 | Cord Clip | 1 |
| 88264014 | 44 | O-Ring $\Phi 2.3 \times \Phi 53.2$ | 1 | 88261051 | 113 | Cord Armor | 1 |
| 88210092 | 45 | Retaining Ring $\Phi 10$ | 1 | 88250000 | 114 | Cord | 1 |
| 88275010 | 46 | Crank Shaft | 1 | 88244039 | 115 | Speed Adjuster | 1 |
| 88210098 | 47 | Palt Key 3x3x8 | 1 | 88210200 | 116 | Cross recessed pan head tapping screws | 3 |
| 88210093 | 48 | Retaining Ring $\Phi 40$ | 1 | 88264157 | 117 | Indicator | 1 |
| 88237002 | 49 | Ball Bearing 6203 (2RS C0) | 1 | 88264158 | 118 | Limit block | 1 |
| 88264015 | 50 | O-Ring $\Phi 2 \times \Phi 39.7$ | 1 | 88223059 | 119 | Main Handle Platen | 2 |
| 88264017 | 51 | Oil Seal Ring $\Phi 30 \times \Phi 17 \times 7$ | 1 | 88210007 | 120 | Hex .Socket Bolt M6x20 | 2 |
| 88290098 | 52 | Crank Housing | 1 | 88224005 | 121 | Orientation Staff Guage | 1 |
| 88264147 | 53 | Right Cover | 1 | 88224004 | 122 | Handle bolt | 1 |
| 88210132 | 54 | Tapping Screw ST4.2x22 | 3 | 88290100 | 123 | Handle Stay | 1 |
| 88210199 | 55 | Cross recessed pan head tapping screws | 6 | 88210099 | 124 | Spring Column Pin $\Phi 6 \times 18$ | 1 |
| 88264016 | 56 | Oil Seal Ring $\Phi 30 \times \Phi 20 \times 5.5$ | 1 | 88264159 | 125 | Side Handle | 1 |
| 88275016-1 | 57 | Gear (35 Tooth) | 1 | 88264172 | 126 | Side Handle cover | 1 |